

Volume 19, Issue 4

March 2009

TCT Presents *Agatha Christie's*

# And Then There Were None

**G**et ready for suspense the last week of March. TCT presents Agatha Christie's *And Then There Were None* on March 26, 27 and 28, 2009.

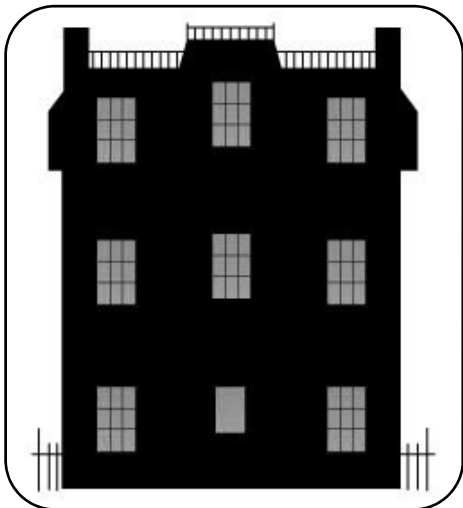
Agatha Christie's well-known murder mystery is sure to supply plenty of chills and thrills. Join

eleven unsuspecting visitors lured to Soldier Island by an unknown antagonist. Each of the visitors carries his or her own dark secret that could be their undoing. One by one, each guest is picked off, but who is the villain? That is for you to find out!

Jonathan Martin plays Captain Phillip Lombard, a world-travelling adventurer. Amye Gousset is Vera Claythorne, a secretary in the service of the guest house's owner. Joining us for the first time on the Lyric stage is Jim Fraiser as Sir Lawrence Wargrave, a cold-hearted judge. Other guests on the island are played by Eddie Taylor, David Neilson, Jennifer Cummings, Reed Robison, Chelsea Petty, Danny McKenzie, and Russell Fox.

Director Josh Mabus is assisted by Craig Helmuth. Bronwyn Teague is Production Manager.

Find out "whodunnit" March 26-28 at 7:30 p.m. and March 28 at 2:00 p.m. Call the TCT office today at 662-844-1935 for more information about tickets.



**March 26-28, 2009**

**7:30 p.m.**

**March 28, 2009**

**2:00 p.m.**

**This production  
is sponsored by**

 **Northwestern Mutual**  
FINANCIAL NETWORK®

**REMINDER: The deadline for applying for a TCT scholarship is April 15, 2009. Please visit our website at [www.tct.ms](http://www.tct.ms) for more information.**

## AACT Honors Jess Mark

Tupelo Community Theatre is proud to announce that the American Association of Community Theatres will present a Spotlight Award in honor of Jess Mark at the 7:30 p.m. performance of *And Then There Were None* on March 28, 2009. AACT, the leading national community theater organization, gives this award nationally to recognize special local achievement in community theater.

This recognition is a fitting way to honor Jess for his more than 25 years of service and leadership to TCT and the community. In 1984 Jess was instrumental in the TCT board's decision to purchase the Lyric Theatre. In 2006 the Lyric stage was named in Jess' honor. Very, very few productions at TCT between 1982 and 2008 didn't have Jess' special "stamp" on them.

Jess' wife Jo and their chil-



Jess Mark with co-stars Renee Baldwin and Jennifer Collins in *Moon Over Buffalo*.

dren will be in attendance on Saturday. Please join us as we say *Thank You Jess* for all your contributions to TCT!

## TCT is Going Green(er)

**TCT is GOING GREEN!**  
 What does that mean and just how can you help? It means doing our part to help save our natural resources. Our printed newsletter is made of paper, which of course, comes from trees. We want to save a few trees.



It also costs lots of money to produce, print, and mail 2400 newsletters six times a year.

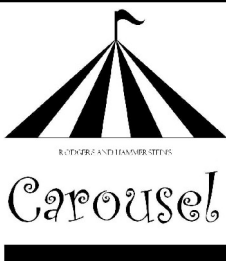
Many of you are already receiving our TCT News every few weeks with important updates and notices via e-mail. (If you do not currently receive e-mails from TCT and would like to, just send us your e-mail address.)

To take going green a step further, we are asking you to consider receiving all TCT information, including our newsletter, electronically. Just drop us an e-mail at [1tct@bellsouth.net](mailto:1tct@bellsouth.net) to let us know your preference.

For those who do not use e-mail or would just prefer a hard copy of the newsletter, we will be happy to continue mailing a copy directly to your home.

If you need more information, call the TCT office at 662-844-1935 or e-mail us at [1tct@bellsouth.net](mailto:1tct@bellsouth.net).

## Carousel Needs More Actors

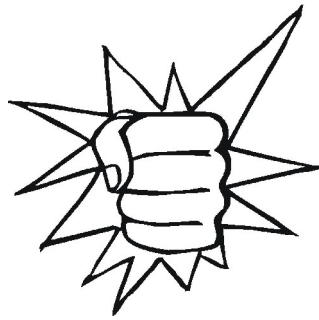


The Gum Tree production of *Carousel* has just a few more slots to fill in its cast. Do you have a carnival skill or an unusual act you can perform? Sonja Jenkins, director of *Carousel*, is looking for a couple of actors who can juggle, walk on stilts, or do anything that might be part of a carnival. To audition or get more information, e-mail [sonja@mss.org](mailto:sonja@mss.org) or call the TCT office at 662-844-1935.

# TCT Partners with S.A.F.E.

When Tupelo Community Theatre was formed forty years ago, our by-laws stated that one of the main purposes for our existence was to educate. TCT's Gum Tree production for 2009 is *Carousel*, the story of a naive young woman who falls for a swaggering carnival barker. After the barker loses his job he becomes increasingly angry and takes his frustration out on her. This classic Broadway musical by Rodgers and Hammerstein speaks about the cycle of domestic violence.

North Mississippi is fortunate to have an organization in Tupelo that helps families deal with this tragic problem. S.A.F.E., Shelter and



Assistance in Family Emergencies, provides services to victims of domestic violence and sexual assault, as well as counseling, on-site day care, court advocacy, and referral services. S.A.F.E. needs our help in many ways. Donations of furniture, household items, canned goods and used cell phones are in constant need.

According to Executive Director Deborah Yates, S.A.F.E. has more than 60 volunteers but always needs others to help the organization. Look for more information concerning TCT's partnership with S.A.F.E. during *Carousel*. For more information contact the S.A.F.E. office at 662-841-9138 or 1-800-527-SAFE.

# New Improv Group Forming



Have you ever wanted to 'act' but you just don't have time or energy to learn the lines in a script? TCT, under the leadership of Caroline Upthegrove, is exploring the idea of forming an improv group in Tupelo. Improv, short for improvisation, is a form of theater which does not use a script or predetermined ideas for dialog, direction, or movement. Improv players usually ask an audience for suggestions about characters, style, location, and circumstances for a performance. The audience gives ideas, and the players spontaneously create an entertaining scene. The players are not falling back on set scripts, nor are they using "tricks" to fool the audience into believing that the scene is being created on the spot. The players are actually

making it up as they go along. If you have any interest in learning more about the group e-mail Caroline at [carolineupthegrove@yahoo.com](mailto:carolineupthegrove@yahoo.com). Or you may call the TCT office at 662-844-1935.

## TCT PERSONNEL

### BOARD OF DIRECTORS

**TCT**  
 200 North Broadway  
 P.O. Box 1094  
 Tupelo, MS 38802

662-844-1935  
 e-mail address:  
[1tct@bellsouth.net](mailto:1tct@bellsouth.net)

Visit us online at  
[tct.ms](http://tct.ms)

Polly Bailey  
 Renee Baldwin  
 Fred Cannon  
 Tracie Maxey Conwill  
 Beth Stone Frick  
 Tommy Green  
 Craig Helmuth  
 Rosemary Jarrell  
 Steve McAlilly  
 Danny McKenzie

Christina Womack

Lynn Nelson  
 Suzanne Oakley  
 Lisa Reed  
 Rob Rice  
 Debra Robison  
 Suzye Sheffield  
 Tonya Smith  
 Michelle Waits  
 Wayne Williams  
 Judd Wilson

### EMERITUS

Jess Mark (1982-2008)  
 Gene Murphey  
 Ruth Liveakos (1969-2008)  
 Edith Thomas

### EXECUTIVE DIRECTOR

Tom Booth



Nonprofit Organization  
**U.S. POSTAGE PAID**  
Tupelo, MS 38802  
PERMIT No. 272

Address Service Requested



Season Sponsor: **BancorpSouth**

This project funded  
in part by a grant  
from the Mississippi  
Arts Commission



# Music, Monet & Margaritas

The Lyric Krewe needs your help! Music, Monet & Margaritas, TCT's annual street fiesta, has been scheduled for Saturday, May 20, 2009 in front of the Lyric Theatre on Broadway. Much work goes into the planning and production of this popular annual event. There are lots of jobs, from helping with food planning to coordinating artists, or even setting up tables and decorating.

Sponsored by Strategic Wealth, Music, Monet & Margaritas will fea-



ture Jeff Houin and the Jam Band, as well as a silent art auction. Tickets are \$15 and will be available at the Lyric office. Proceeds from this event support the educational programs at TCT.

For more information, or to volunteer for the event, please contact Jennie Bradford Curlee at 662-842-4521 or e-mail her at [jcurlee@cdfms.org](mailto:jcurlee@cdfms.org). Or you may call the TCT office at 662-844-1935.